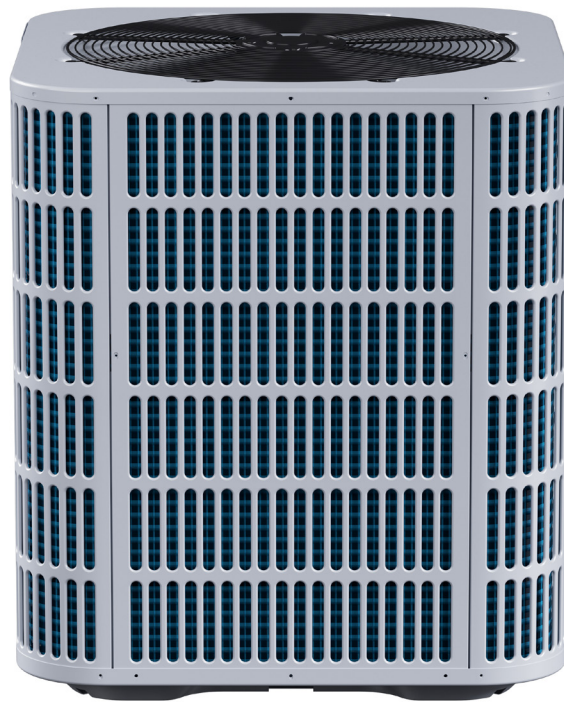
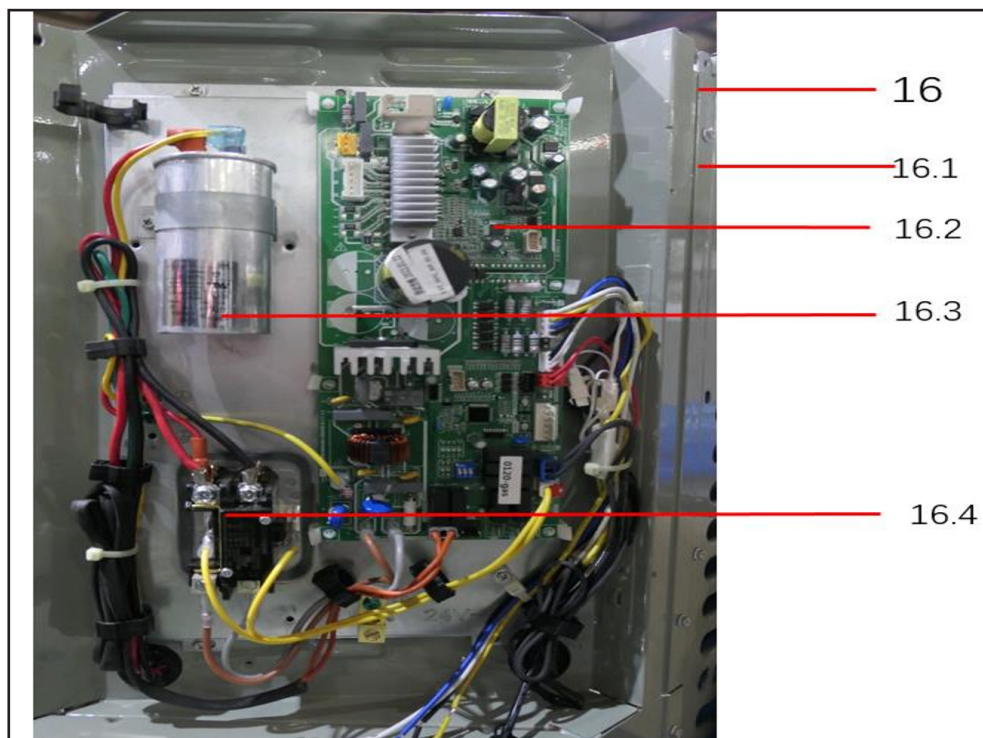
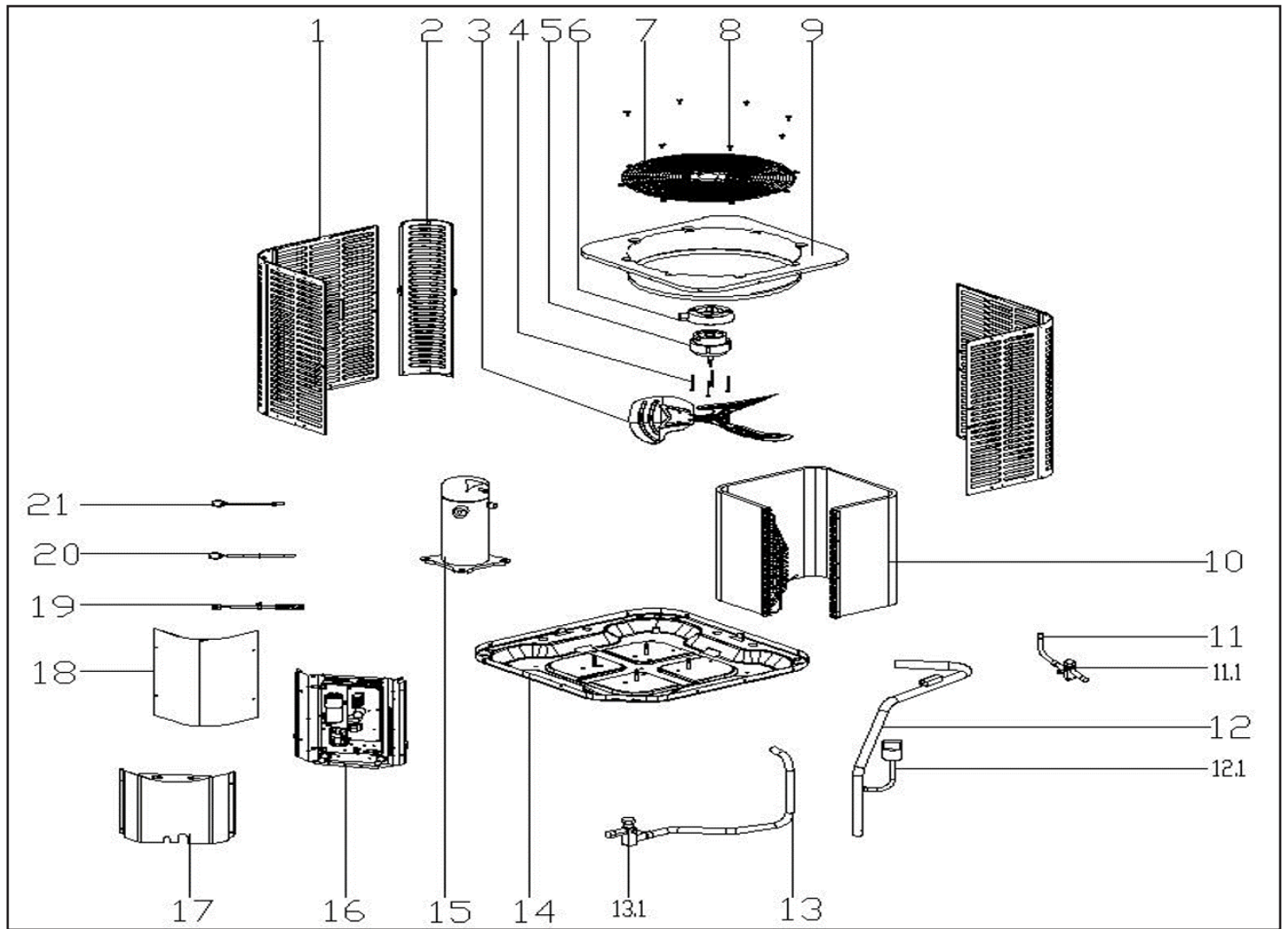

Comfort-Care® **Century**®
SE Series

Split System Air Conditioner

RSA1548S1A
Parts List



MARS®



| EX_ID | Spare Parts Code | Part Name(EN) | Qty. | Recommend store spare parts |
|-------|------------------|--|------|-----------------------------|
| 1.1 | 12223000A02870 | Side panel assembly | 2 | |
| 1.2 | 12223000A02929 | Side panel assembly | 2 | |
| 2 | 12223000002572 | Side panel assembly | 3 | |
| 3 | 12200104000038 | Fan | 1 | YES |
| 4 | 11301805000012 | Motor Mounting bolt | 4 | |
| 5 | 11002015015328 | Brushless DC Motor | 1 | YES |
| 6 | 12123000000464 | Motor installation board ass'y | 1 | |
| 7 | 12227700003729 | Top Cover | 1 | |
| 8 | 11301002000001 | Stainless steel bolts | 8 | |
| 9 | 12223000001094 | Top cover assembly | 1 | |
| 10 | 15823000000982 | Condenser ass'y | 1 | YES |
| 11 | 15423000003178 | Stop valve ass'y | 1 | |
| 11.1 | 15500206000018 | Block valve | 1 | YES |
| 12 | 15423000005738 | Discharge pipe ass'y | 1 | |
| 12.1 | 17400516000032 | Pressure switch | 1 | YES |
| 13 | 15423000001316 | Stop valve ass'y | 1 | |
| 13.1 | 15500206000017 | Bar-Stock Service Valve | 1 | YES |
| 14 | 12223000005894 | Base assembly | 1 | |
| 15 | 11102010001185 | Fixed Speed Scroll compressor | 1 | YES |
| 16 | 17223000008823 | E-part box assembly | 1 | |
| 16.1 | 12223000015849 | Installation plate of electric parts subassembly | 1 | |
| 16.2 | 17123000A04026 | Outdoor main control board assembly | 1 | YES |
| 16.3 | 17400103000133 | Capacitor | 1 | |
| 16.4 | 11203502000032 | AC contactor | 1 | YES |
| 17 | 16300201008027 | Wooden packing support | 1 | |
| 17 | 12223000016090 | Side panel assembly | 1 | |
| 18 | 12223000A05994 | Side panel assembly | 1 | |
| 19 | 17400513003814 | Discharge Temperature switch | 1 | YES |
| 20 | 11201007000073 | Room Temperature Sensor | 1 | YES |
| 21 | 11201007000136 | Pipe Temperature Sensor | 1 | YES |

Due to ongoing product improvements, specifications and dimensions are subject to change and correction without notice or incurring obligations. Determining the application and suitability for use of any product is the responsibility of the installer. Additionally, the installer is responsible for verifying dimensional data on the actual product prior to beginning any installation preparations.

Incentive and rebate programs have precise requirements as to product performance and certification. All products meet applicable regulations in effect on date of manufacture; however, certifications are not necessarily granted for the life of a product. Therefore, it is the responsibility of the applicant to determine whether a specific model qualifies for these incentive/rebate programs.



1900 Wellworth Ave., Jackson, MI 49203 • Ph. 517-787-2100 • www.marsdelivers.com

